

Pit Dewatering

The Kings Mountain Mine's open pit began accumulating rainwater over the last several decades since prior mining operations ceased in the 1990s. To continue to conduct additional prefeasibility studies and ultimately resume mining operations, the accumulated water must be removed. We expect to dewater the pit over an 18-month period. Albemarle is treating and discharging water under the limits of a state-issued National Pollution Discharge Elimination System (NPDES) permit which is required to protect downstream water resources.

THE DEWATERING PROCESS

Treating the pit's water requires a multi-step process to ensure the discharged water meets regulatory standards. To begin the process, water is conveyed by electrical pumps from the pit to a water treatment plant where the water is filtered to remove sediments and treated to remove any potential contaminants. Lastly, the water is treated by ultrafiltration to ensure clarity and transferred to a finished water tank before being pumped to discharge into Kings Creek.

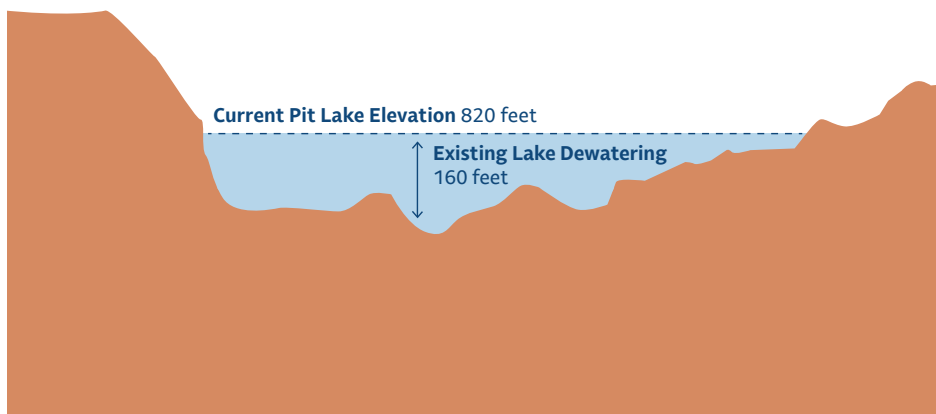
Water quality is continuously monitored with in-process sensors for pH, clarity, dissolved oxygen and temperature. We expect to conduct weekly to quarterly sampling along various points of the dewatering system from the treatment plant to Kings Creek.

Albemarle is discharging the water at a rate that is compliant with standards to preserve the integrity of Kings Creek and the river basin.

MANAGING ODORS

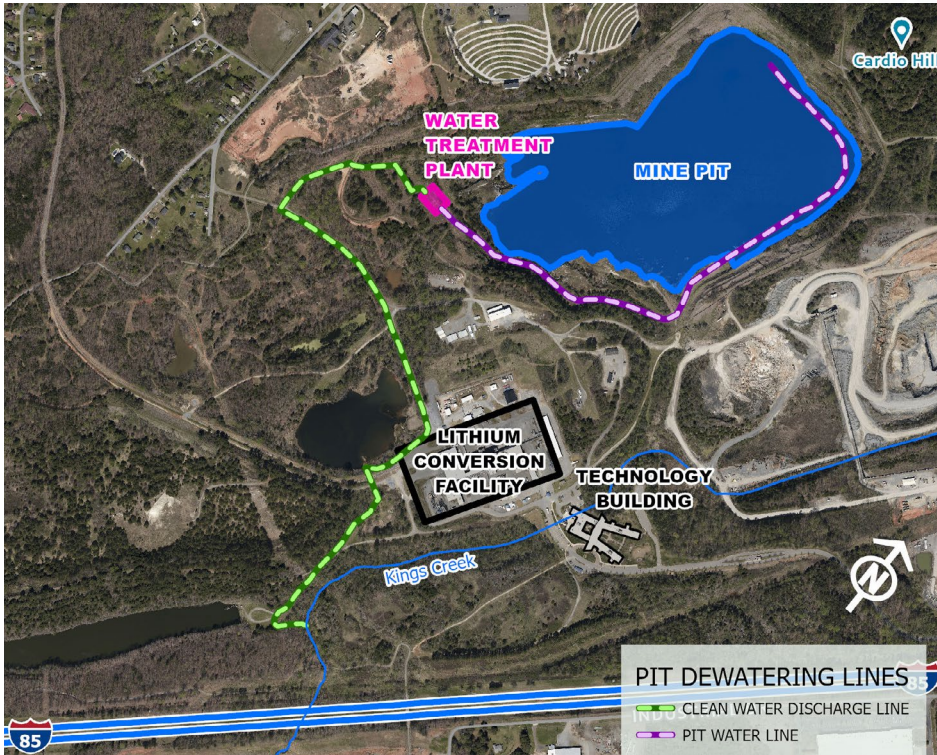
There may be an occasional odor as the water level drops in the pit during dewatering and decomposed materials at the bottom of the pit are exposed. The water treatment process was specifically selected for pit dewatering to mitigate odor during the process due to low dissolved oxygen at depth in the pit lake. We anticipate there will be little to no discernible smell beyond the pit during the process.

Topography of the Existing Mine Pit



To safely dewater the 1.3 billion gallons of accumulated water in the pit, the dewatering process is expected to last up to 18 months.

Pit Dewatering Layout



Water Treatment Plant: Water is being pumped from the water treatment plant at a rate of 2,500 gallons/minute and discharged safely into the Kings Creek.



Wildlife biologists have completed studies of the aquatic species
to ensure that no threatened or endangered species live in or around the pit.



Wildlife Biologists Monitoring Aquatic Species

PROTECTING THE WILDLIFE

The only aquatic species found in the pit is a common fish species (bluegill) which is not listed as threatened or endangered.

We expect the water drawdown in the pit will occur slowly enough that other species that utilize the water body (birds and mammals) can adjust and access other water bodies on and off-site.

Further information is available in Spanish upon request or at albemarlekingsmountain.com

For more information or to provide community feedback on the project:
Email: kmcommunity@albemarle.com | Phone: 704-734-2775 | Website: albemarlekingsmountain.com
Mail or In-person: 129 West Mountain Street, Kings Mountain, NC 28086

Albemarle leads the world in transforming essential resources into critical ingredients for mobility, energy, connectivity and health. We partner to pioneer new ways to move, power, connect and protect with people and planet in mind, enabling a more resilient world. Our global headquarters is approximately 35 miles from Kings Mountain in Charlotte, NC.

