

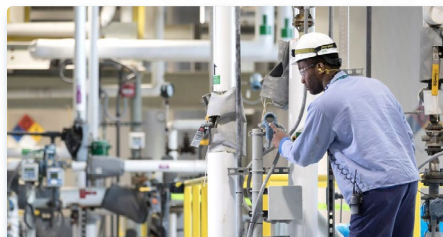
The Element

February 2024



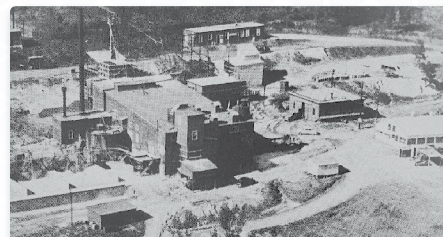
COMMUNITY MEETINGS ►

Recent Kings Mountain community meetings allowed Albemarle to gain valuable resident feedback and perspectives about the proposed mine project.



ACHIEVING A SAFETY MILESTONE ►

The Albemarle Kings Mountain team achieved a remarkable milestone recently, celebrating their fourth consecutive year of work without a recordable injury.



HISTORY OF KINGS MOUNTAIN ►

The Kings Mountain lithium mine commercial mining operations date back to the late 1940s. Learn about the critical role that the mine played in history in a new video.



Upcoming Events *Calendar* ►

COMMUNITY PERCEPTION SURVEY

Your opinion matters! Albemarle encourages you to participate in an online survey we are conducting in March to provide your input on Albemarle and the proposed Kings Mountain Mine project. Watch your email, Facebook, and our website for a link to the survey to participate.

[See story on page 8 for more details ►](#)

MINE TOURS: MARCH 1, 12, 28

[Visit our website for details ►](#)

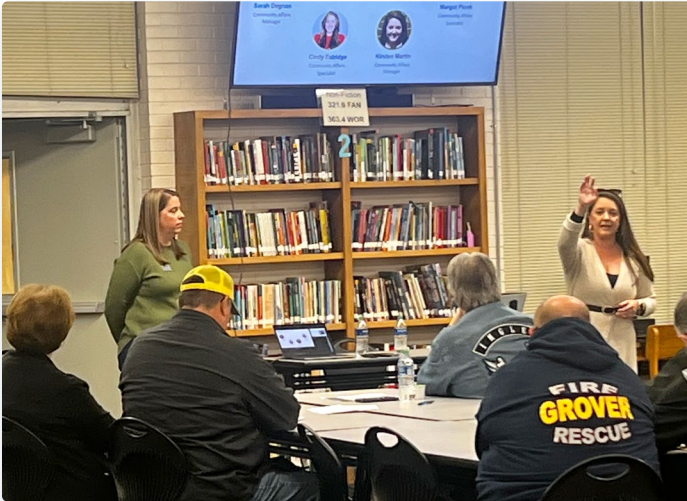
MARCH 16: SOUND THE ALARM EVENT

Albemarle is partnering with the Red Cross, and the Kings Mountain and Bethlehem Fire Departments to install smoke alarms in Kings Mountain. Contact us if you'd like to volunteer at kmcommunity@albemarle.com.



Visit the *Albemarle Kings Mountain Website* ►

Community Meetings *Recap*



To encourage community engagement in Albemarle's Kings Mountain mine, Albemarle recently hosted six community meetings from January 27 through February 7. The meetings were held to introduce the proposed project to residents and help overcome barriers that may have otherwise prevented people from attending previous Albemarle-hosted town halls and events.

In meetings led by the Albemarle Community Affairs team, residents learned about the proposed mine and its significance to Kings Mountain, the importance of lithium as a critical resource, and ways community members can provide feedback on the project.

Participants came prepared to ask questions and discuss many topics including the amount of land Albemarle is purchasing, to share concerns about the Gateway Trail, what community benefits will the project provide, and groundwater safety.

Albemarle shared a map of the current mine, accompanied by a geological map to demonstrate the approximate location of the lithium resource and address concerns about potential mine expansion further into the community.

Albemarle continues to participate in planning discussions with the Gateway Trail Board of Directors, the City of Kings Mountain, and Cleveland County to develop a plan for a new section of the Gateway Trail

that aligns with the city's master plan for parks and recreation facilities, and we remain committed to both preserve and enhance recreation opportunities for our community. We will continue to support engagement with our local community to gain input and ensure the best vision for the future of the trail can be realized.

Currently, there is no timetable for the trail to be affected by potential mining operations at the Kings Mountain site, and the trail will continue to remain open to the public across Albemarle's property.

The Albemarle team also discussed many benefits that the project would bring to the community including the creation of approximately 300 new jobs. The team explained how they were working with local partners to help provide residents with the training needed for these jobs. Residents also learned more about the geological makeup of the area, and why Albemarle does not anticipate any impact to surrounding groundwater resources. Additionally, residents learned about Albemarle's water monitoring program and were assured the monitoring program would continue through the entire life cycle of the mine.

Thank you to all community members who attended these meetings. They are just one way in which Albemarle encourages transparency, feedback and engagement with the community. We intend to address all questions and concerns about the proposed reopening of the mine and will continue to hold community meetings in the future. We look forward to meeting with everyone again soon and hope you will bring your neighbors, friends, and family to future meetings.

Reaching Out

If you would like for us to speak to your group or club, or at a location near you, please contact us at kmcommunity@albemarle.com or 704-734-2775.

Achieving a Significant Safety Milestone

We are proud to share that the Albemarle Kings Mountain team achieved a remarkable milestone recently, celebrating their fourth consecutive year of work without a recordable injury. This achievement includes logging more than one million hours worked at the Lithium Conversion Facility and Technology Center on the Kings Mountain site.

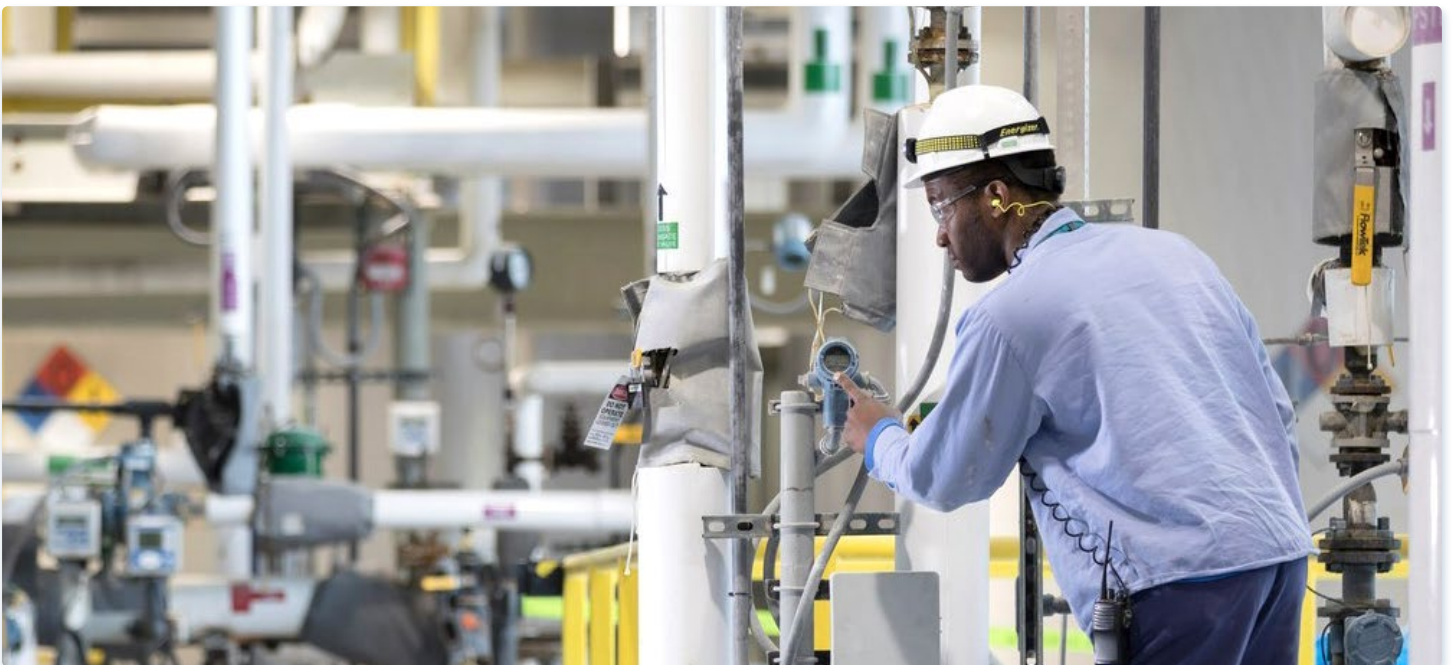
“One important aspect of our safety culture is the value we place on care. At Albemarle, we prioritize the safety and well-being of our communities, employees, and environment,” said Gabe Merritt, site safety manager. One key principle Albemarle employees follow is to “do it right the first time and go home safe.”

Collaboration is another crucial component of Albemarle's safety culture. Senior leadership actively participates in morning safety meetings, encouraging open dialogue and addressing any questions or concerns. We also conduct field audits to assess ongoing work processes. These audits help us identify areas for improvement, and we take corrective and preventive action accordingly. By reviewing the findings from these internal audits, we can focus our efforts on specific areas that require attention.

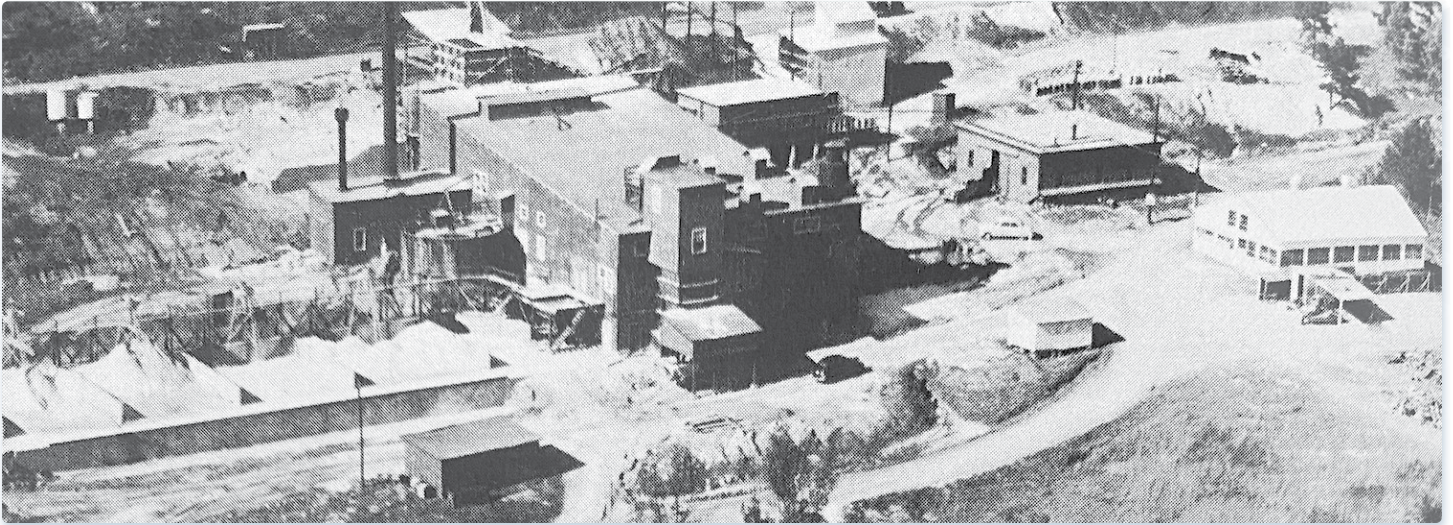


This milestone was not the result of one specific action,
but rather a combination of smaller actions that contribute to our overall culture of safety.

The achievement of reaching four years without any recordable incidents is not attributable to one single action but to everyone taking an active role in their job to create a culture of safety. “I want to express my gratitude to every individual at Albemarle Kings Mountain for their dedication, collaboration, and commitment to performing work in the safest possible manner,” adds Merritt. “This achievement reflects the unity and collective efforts of our entire team in accomplishing our goals.”



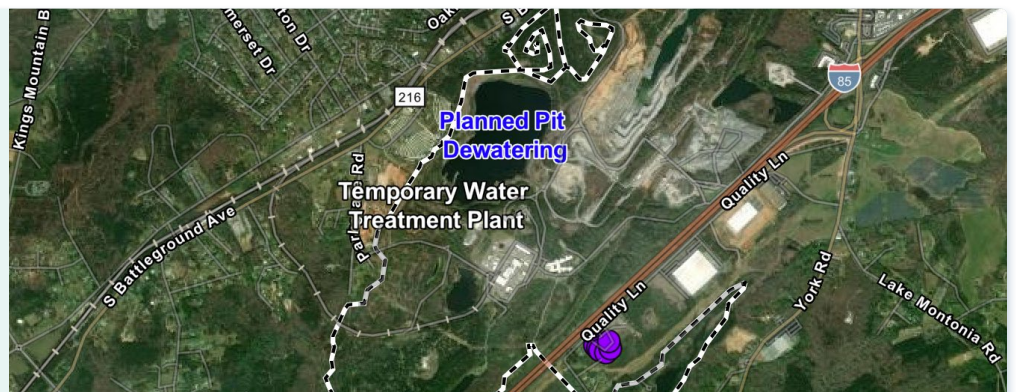
History of the *Kings Mountain Mine*



Operations at the Kings Mountain lithium mine date back to the 1940s. Watch our newly released [video](#) on the History of Kings Mountain to see the critical role the mine played for the U.S. economy, national defense, and the Kings Mountain region.

Mining *Activities Map*

Want to know what's happening at the Kings Mountain mine site? Visit our Mining Activities Map on our [website](#) to get a weekly update on what our team is doing at the proposed mine site.



Community Events *Recap*

Albemarle Reaches \$1M in Charitable Giving

Albemarle takes pride in supporting Kings Mountain and the surrounding communities through charitable contributions and volunteer hours to local groups and events. In 2023, the company contributed \$350,000, helping Albemarle to achieve a milestone of giving \$1 million to the local community since 2016. Albemarle is committed to supporting educational programs with an emphasis on STEM, cultural initiatives that bring people together, and health and social services in our community.

We are proud to be a part of the community and appreciate all who make it a great place to live and work. The following list represents just a few of the more than 30 charitable organizations that Albemarle has supported:

- Kings Mountain YMCA
- Davidson Association
- Cleveland County School System
- Cleveland County Partnership For Children
- Feeding Kids Cleveland
- Making it Work Scholarships
- Kings Mountain Library
- Kings Mountain Little Theatre Inc.
- Kings Mountain Elite
- Kings Mountain Historical Museum
- Kings Mountain Crisis Ministry, Inc



\$1M

in charitable giving since 2016



UNCC Women In Business Group Tours Mine Site

A group of aspiring students from the University of North Carolina, Charlotte Women in Business group joined members of the Albemarle Kings Mountain team in early February for a tour of the proposed mine site. While the rain dampened an up-close look at the existing mine pit, the group was able to get a great vantage of the site from atop the site overlook. Albemarle geologist Jennifer Baar shared details about the area's geology and its lithium-rich resource and why it is important to the Kings Mountain community. During a visit to the Kings Mountain Technology Center, the students toured the facility's experience center (pictured) to learn more about lithium, how it is mined, and all its uses. They also learned about the potential economic impact of the proposed mine project and the wide range of skills required to operate the mine.

Ron Lindsey, mine safety lead, discussed the importance of site safety and the necessary precautions the mine must take to ensure that employees stay safe. Last summer, these precautions included watching out for a bear who showed up at the site and decided to hang out on an employee patio for a few days.

Community Events *Recap*



Earth Sciences Students Take to the Field

Recently, Kings Mountain High School students from an earth sciences group took their classroom learning experience into the field with a visit to the Kings Mountain mine site. Albemarle geologist Kwame Frepong taught them about the technology side of mapping the lithium resource and conducting exploratory drilling at the site to further understand the depth and breadth of the resource in preparation for mining.

“We hope to get more kids interested in STEM and related topics because we see so much opportunity in these areas,” said Margot Plonk, community education specialist for Albemarle and former earth science and physical science teacher. “Our mine tours are designed to engage students in new ideas and new ways of thinking around the sciences and technology.”

The students are interested in starting a STEM group and want to work with Albemarle to help develop the program. This includes volunteering for future events and taking part in events in the Kings Mountain community.

Albemarle Sponsors Foundation Gala

On February 17, members of Albemarle’s Community Affairs team put on the glam to attend the HealthCare Foundation of Cleveland County Gala where Albemarle served as the presenting sponsor. The foundation provides many programs and services to Cleveland County residents that are essential to the well-being of the Kings Mountain community.

“Albemarle believes in investing in our community,” said Kirsten Martin, Albemarle Community Affairs. “We are dedicated to continue investing in organizations that are making a direct impact on the lives of Cleveland County residents.”



Memories at the Mine

Patterson Brothers Mine Tour

On February 5, the Kings Mountain mine site got a special visit from William Patterson, a former Kings Mountain resident and employee who once worked for Foote Mineral, the original mining operation at the Kings Mountain site. Patterson and his two brothers, Jay and Joe, joined Albemarle on a site tour in late January. During the tour, Mr. Patterson shared his experience working at the Kings Mountain site and exchanged some valuable stories with the group of his past experiences.

"I worked at Foote Mineral in the summers of 1967, 1968, and 1969 while on break from Wake Forest University. The first summer I worked a swing shift in the plant which operated 24/7. The following two summers, I worked in the mine as an operator during the first shift.

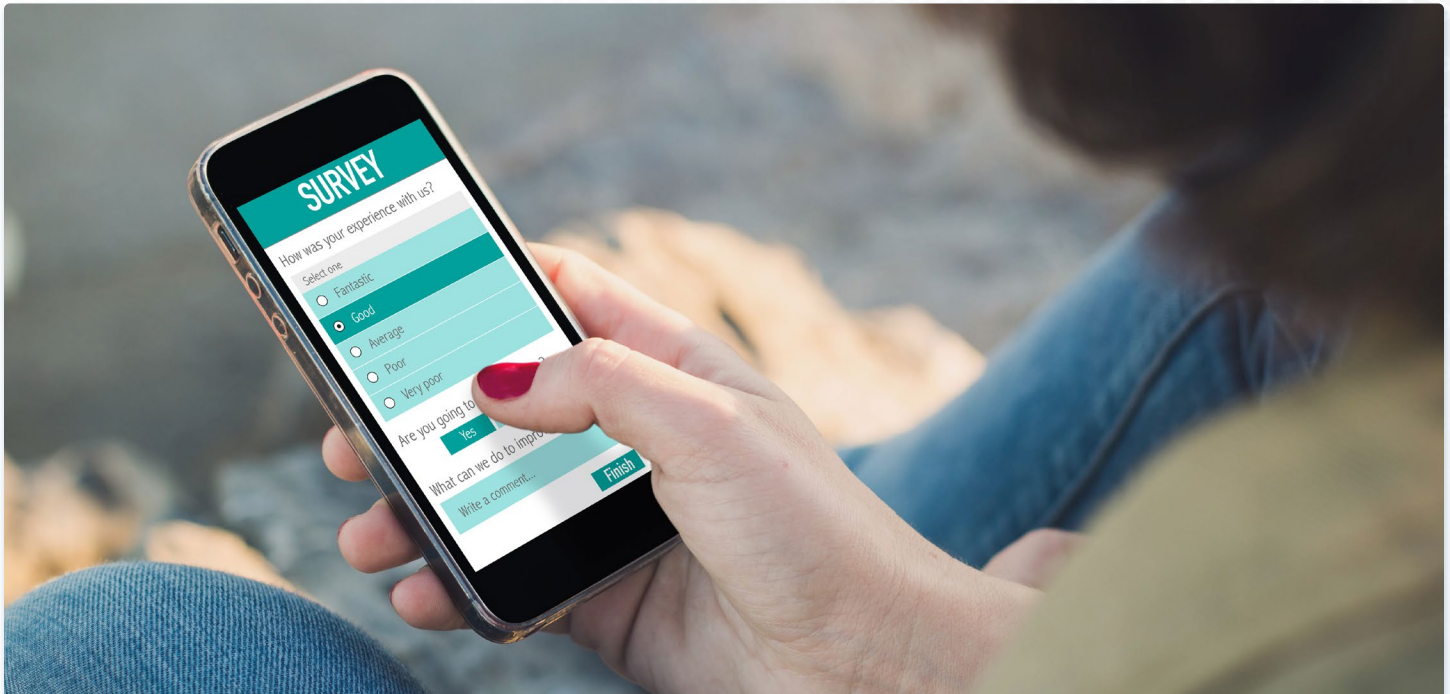
The folks in the plant and mine were all great. I enjoyed working with them and believe they were happy to have me there too," said Patterson. "During college, I looked forward to finishing my exams in the spring and getting back to my friends at Foote Mineral. I honestly think I had the best possible summer job—nothing but good memories."

Interested in scheduling a mine tour for your group? Please contact us at kmcommunity@albemarle.com and inquire about available dates and times.



“ The folks in the plant and mine were all great. I enjoyed working with them and believe they were happy to have me there too. ”

—WILLIAM PATTERSON, (PICTURED CENTER) FORMER KINGS MOUNTAIN MINE EMPLOYEE



Upcoming Community Survey

Albemarle is coordinating an independent survey of residents in Kings Mountain and surrounding counties beginning in March about the proposed Kings Mountain mine redevelopment. We want to hear from as many people in the community as possible. Watch your email, Facebook and the Albemarle Kings Mountain website for a link to participate in the online survey and share your thoughts. Please share the survey with friends, relatives, and others—your input matters!



Visit the Albemarle Kings Mountain Website ►

Tell us *how we're doing* ►

Sign up for *future newsletters!* ►

Albemarle leads the world in transforming essential resources into critical ingredients for mobility, energy, connectivity and health. We partner to pioneer new ways to move, power, connect and protect with people and planet in mind, enabling a more resilient world. Our global headquarters is approximately 35 miles from Kings Mountain in Charlotte, NC.

For more information visit albemarlekingsmountain.com

© 2024 by Albemarle Corporation. All rights reserved.
The Albemarle logo is a registered trademark of Albemarle Corporation.