

The Element



Kings Mountain

June 2023



Meet Albemarle

Albemarle transforms essential resources into critical ingredients for mobility, energy and health. See how Kings Mountain will play a big part in this mission!



All About ESIA

Albemarle is providing a unique opportunity for community input through an Environmental and Social Impact Assessment (ESIA). Learn more about how your opinion counts!



A Letter from Albemarle's Mining Director

Fernando Rodriguez shares his thoughts, experiences and aspirations for the proposed Kings Mountain lithium mine.



Upcoming Events

Calendar of Upcoming Events

June 14th Workshop

Albemarle is hosting a second round of end land use workshops to gather community feedback. This workshop will be focused on the end land use of the mine area, meaning once the mine is out of operation what does the community want to see on that property. This workshop is open to community members. Please use the links below to register.

[Click here to register for 8-10am workshop](#)

[Click here to register for 4-6pm workshop](#)

June 22nd Mining Tour

[Click here to learn more](#)



Visit the [Albemarle Kings Mountain Website](#)



Scan the code to sign up for our newsletter!

Meet Albemarle

For over 100 years, Albemarle (a global company headquartered just down the road in Charlotte, NC), has transformed essential resources into critical ingredients for mobility, energy, connectivity, and health. To help meet the emerging demand for lithium to power a low carbon economy, we are considering a potential restart of production at our operation in Kings Mountain. The new proposed mine will provide a much-needed domestic lithium resource to help create more sustainable energy sources.

Kings Mountain has a long and proud history as a mining community. For more than a century, this region of North Carolina has been known for its geologically rich resources.

The lithium mine was an important part of the Manhattan Project in World War II that helped develop nuclear power. Today, the Kings Mountain location not only houses a domestic lithium resource, it also includes our 5,000-metric-ton conversion site that produces battery-grade lithium hydroxide for customers around the world, as well a state-of-the-art, 57,000 square-foot Battery Materials Innovation Center (BMIC).

Established in 2021, the BMIC is one of the most sophisticated advanced lithium material sites in the world and allows us to innovate next-generation battery materials and deliver high-performing, cost-effective batteries for the rapidly growing EV market.

As the demand for lithium-ion batteries grows, driven in large part by increasing global demand for electric vehicles, mobile devices and grid storage, we are excited to partner with Kings Mountain

to be a leader in this field. We see these as important markets, intended to improve our quality of life by reducing air pollution, promoting electronic mobility, enabling portable medical devices and advancing renewable energy. And at the heart of it all is lithium.

Thanks to Kings Mountain, Albemarle will be the only U.S.-based lithium company with multiple U.S. sites for lithium extraction, processing, research and development capacity to enable the next frontier of lithium-ion battery performance.

Albemarle takes pride in being part of the Kings Mountain community and considers the well-being of our neighbors as an essential component to our business decisions. We strive to make a positive impact on the community through open, transparent communication and economic and community prosperity.

Throughout the years-long process associated with assessing, developing and eventually closing the mine, we plan to connect with the community through local townhall meetings, the Albemarle Kings Mountain Project Center in downtown Kings Mountain, with mine tours, on our website, and numerous other coming events. Our engagement will be supported through numerous outreach opportunities that will be posted on our website calendar of events and on our Facebook page.

Thank you for welcoming us to your community, Kings Mountain. Together, we have **All the Elements for a Better World.**



Frequently Asked Questions

What’s happening?

Kings Mountain has a world-class resource in lithium and could play a critical role in establishing U.S. leadership in the electric vehicle (EV) evolution. Albemarle is conducting assessments to determine the feasibility of opening a lithium mine in Kings Mountain. Depending on the permitting timeline, we estimate that initial construction could start in late 2025 with potential production starting as early as 2027.

Why?

As one of the world’s most important minerals, lithium helps power our lives as a building block for modern battery technology and is a key component of helping us transition to decarbonize the energy system.

Will this impact the environment of Kings Mountain?

Albemarle plans to pursue a development option that is focused on minimizing environmental impacts using practicable, alternative solutions, going beyond the requirements of the National Environmental Protection Act (NEPA) process.

Why Kings Mountain?

Kings Mountain is located in the Carolina Tin-Spodumene Belt, an area in the western Piedmont known for its lithium resource. As global demand for EVs grows, people are seeking greater security from geopolitical risk and sustainability. This includes reducing carbon emissions in their supply chains. Building out the U.S. supply chain, and including Kings Mountain, is one way to contribute to this effort, while simultaneously providing numerous economic opportunities for the community.

Will you work with the community?

Absolutely! Check the Albemarle website for regular updates. Make your voices heard at a quarterly Town Hall meeting or stop by the Project Center in downtown Kings Mountain to speak with a community liaison. We look forward to community feedback and appreciate your support.



Come Say Hi!

The Kings Mountain Project Center, located in historic Griffin Drug on West Mountain Street, is a meeting and education center open to walk-in visitors who want to learn more about the proposed Kings Mountain Mine project, employment information and potential community investment. It’s also home to the Albemarle Kings Mountain Community Affairs staff!

The Project Center is designed to serve your community, providing information about the proposed mining activities and informing you of the latest happenings. Whether you stop by to watch our state-of-the-art mining videos on our giant TV screens or want to learn more about how lithium is a much-needed resource for renewable energy, our doors are open, and we’d love to meet you!

Join Us for a Mine Tour

Ever wonder what a mine site looks like, or what it takes to develop a mine? Albemarle is offering a mine tour at our Kings Mountain site to provide a first-hand look at a former mine and discuss the benefits of mining. The 45-minute tour will include history, geology and current information on the prefeasibility studies that have been completed, with plenty of opportunities to ask questions. Tours are limited to 12 people, ages 10+. Tour attendees will meet at the Albemarle Project Center (129 W. Mountain Street), and travel together by van to the mine site.

Our first tour will be **Thursday, June 22 from 2-4pm**. Email Cynthia.Estridge@albemarle.com to register for the tour, which will be filled on a first come, first served basis. We will create a waitlist if we reach capacity.

Requirements for the tour include:

- ID to enter the site
- Long pants, long sleeves and closed-toe shoes
- Personal protective equipment, which we provide on site
- Sign up 48 hours ahead of tour date
- Signed waiver

Note: While the tour is 45 minutes, we ask that you plan for 2 hours to cover logistics including a safety brief and travel to the mine and back



Meet Albemarle’s Community Affairs Team

Our Community Affairs mine team knows about you, so it’s only fair that you get to learn about us! We are committed to supporting the community and encourage you to contact us at kmcommunity@albemarle.com or **704-734-2775** if you would like to learn more about Albemarle and our work.

Kirsten Martin, Community Affairs

Kirsten.Martin@albemarle.com

Kirsten, a native of Kings Mountain, is Albemarle’s Community Affairs Manager. She is thrilled to be part of a project from the beginning stages and is looking forward to building a team focused on ensuring the community’s input is integrated into the plans for restarting the mine. “We want to be accessible and transparent every step of the way,” she said, adding, “I am also very excited about our new downtown Project Center and look forward to engaging directly with our community. Outside of work, you can find Kirsten cheering for the Boston Red Sox!



Sarah Degnan, Community Affairs Specialist

Sarah.Degnan@albemarle.com

As a member of the team since January 2023, Sarah works closely with the community in all aspects of Albemarle’s proposed mine project and organizes public events to share updates about the project, answer community questions, partner with nonprofits and ensure Albemarle is a great community partner. “The opportunities with this proposed project are endless and I am excited to see all the benefits it provides to Kings Mountain and Cleveland County specifically, not to mention the role that this site could play in the global clean energy transformation.”

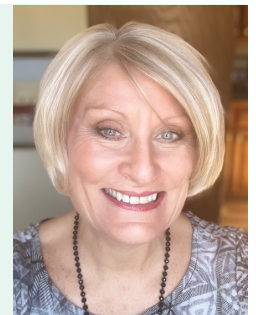


Margot Plonk, Community Affairs Education Specialist

Margot.Plonk@albemarle.com

As Albemarle’s Community Education Specialist, Margot is looking forward to helping to grow the health and vitality of her “adopted” hometown of Kings Mountain. “I love getting back in touch with the community and look forward to this in my new role,” she added.

As for a fun fact about her? She completed the Marine Corp Marathon in 2012 in the top 20% of her age group!



Cindy Estridge, Community Affairs Operations Specialist

Cynthia.Estridge@albemarle.com

As Albemarle’s Community Affairs Operations Specialist, Cindy is excited to combine her industry experience and STEM education background to positively connect Albemarle to the Kings Mountain community and greater Cleveland County area. Cindy is no stranger to Cleveland County, as she has been a certified REFIT instructor, teaching volunteer fitness classes across the county for over ten years. For fun, she hiked more than 70 miles of National Parks in 2021, including a hike into the Grand Canyon. Cindy also has a passion for helping students find scholarships and manages a college prep page on Facebook.



All About ESIA

(Environment and Social Impact Assessment)

One of the many preparations Albemarle is taking to determine the impacts of a mine in Kings Mountain is conducting an Environment and Social Impact Assessment (ESIA) process. This process comprehensively identifies and assesses any environmental, social, health and safety impacts that could occur from the development, operation, and closure of the Mine.

Why?

Our objective is to have the ESIA process align with the Initiative for Responsible Mining Assurance (IRMA)'s multi-stakeholder engagement process. We can use this alignment and assessment to inform the mine design and develop appropriate management measures to minimize adverse impacts and enhance positive outcomes.

Albemarle's ESIA Process supplements North Carolina's National Environmental Policy Act (NEPA) regulatory review process and though entirely separate, will be used to inform the North Carolina and United States permitting review.

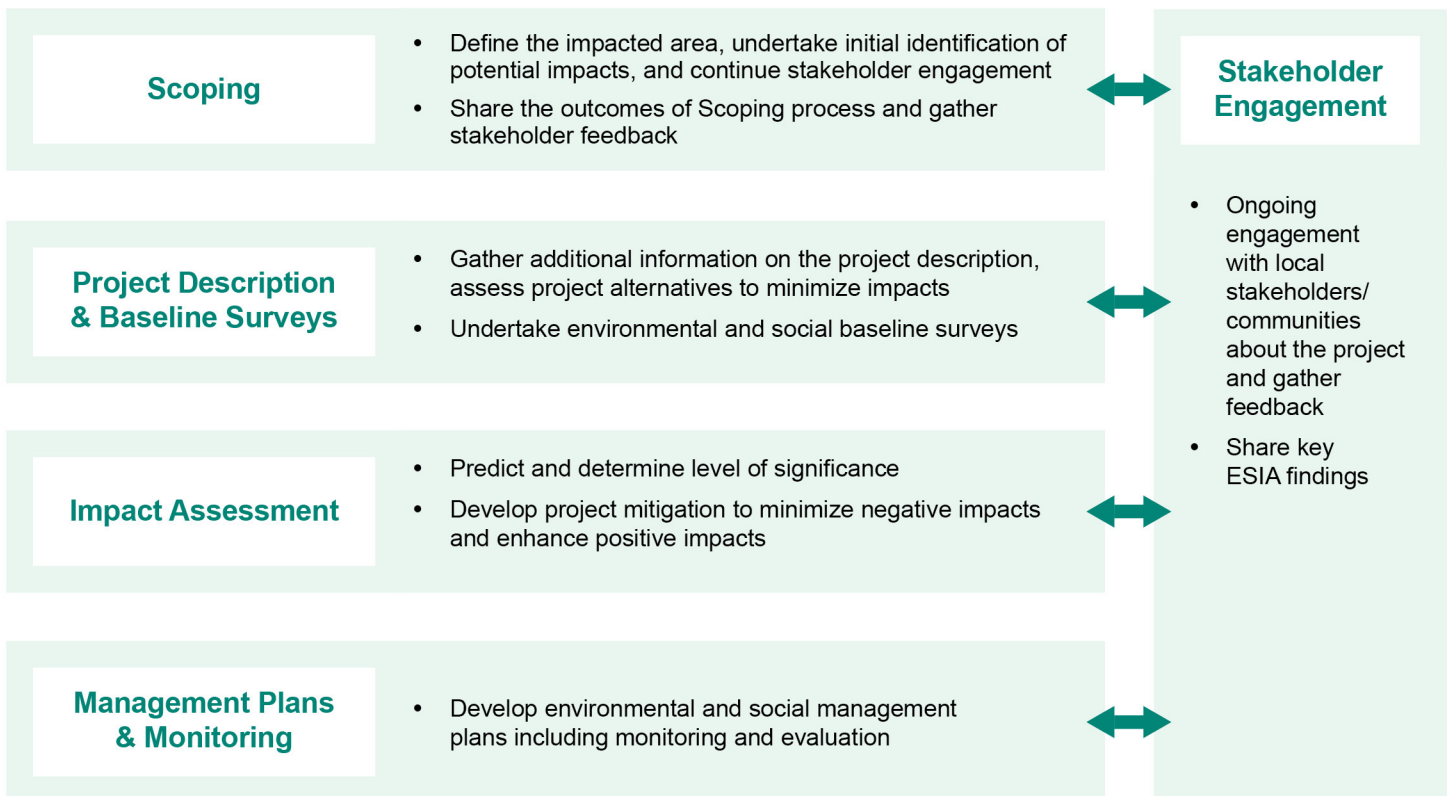
How?

When we prepare an ESIA, we consider:

- Impacts on the physical environment (e.g., air quality/GHG, noise, vibration, water);
- Impacts on the biophysical environment (e.g., wetlands, sensitive areas, fauna, and flora);
- Impacts on the human environment (e.g., community health and safety, cultural heritage, local economy);
- Cumulative impacts to the above environments; and
- Impacts from unplanned events that are a part of customary risk mitigation.

What does this mean for the Kings Mountain Community?

Throughout the ESIA process, Albemarle will continue to share—and seek—information, knowledge, input, and feedback from all stakeholders through our accessible engagement channels.



Letter From Albemarle's Mining Director

Hello Kings Mountain,

Albemarle has been a part of the Kings Mountain community since 2015 and appreciates the many valuable relationships we have built with you over the years. I want to thank you for allowing Albemarle to be a part of your community.

For the last three decades, I've worked through all aspects of mining—from ideas through inception—culminating in my current role in Resources Mine Development at Kings Mountain. Speaking on behalf of my colleagues and myself, I want to share with you that Albemarle is VERY excited to be a part of the proposed lithium mine in Kings Mountain!

This region of North Carolina is known for having geologically rich resources, which means there are plenty of opportunities not just for economic growth, but sustainable growth, too. As a former mining site, many of the logistics and infrastructure needed to build and operate a successful mine are already in place. Not to mention, Albemarle has been operating in Kings Mountain for several years.

We believe Albemarle's core values—**Care, Curiosity, Collaboration, Humility Accountability and Integrity**—make us a perfect partner. We strive to build the right team with the right experience (including some of the world's leading experts), to create a world-class mining operation dedicated to going above and beyond standards.

We also know that just saying it doesn't make it true—so we have the data to prove it. In addition to completing many successful operations and joint ventures in other parts of the world, Albemarle holds the top spot as the world's largest supplier of lithium. We don't just mine the lithium, we are involved in every step of the process for electric batteries, too.

While the proposed mine site stands to provide a much-needed domestic lithium resource, the project also will bring opportunity to the people of Kings Mountain. As projects of this size can take years to develop, we plan to support and invest in the community through sustainable improvements. The proposed mine is expected to create more than 1,000 construction jobs and over 300 full-time, highly skilled positions in engineering, geology, metallurgy, environmental, health and safety, and administration, generating economic growth for Kings Mountain and in communities throughout Cleveland and Gaston counties.

From the beginning, Albemarle has been committed to being transparent. We hope to share mine plans this summer, as well as plans for dewatering the current mine pit. We also plan to submit our state permit later this year and continue to host workshops and conversations focused on land use plans for the site.

We encourage anyone who has questions, comments or concerns to provide feedback every step of the way in our town hall meetings, on our website or by visiting the Project Center in downtown Kings Mountain.

Thank you to the Kings Mountain community for coming along on this journey.

Sincerely,

Fernando Rodriguez
Mining Director





Checking in With Community Affairs

Did You Know...

Albemarle established a Community Advisory Panel (CAP) to promote sustained and meaningful dialogue between the town of Kings Mountain and nearby communities.

CAP members represent business, environmental, social, and economic development interests participate in a monthly candid conversation to provide input on various communication with the Kings Mountain community. A diverse CAP encourages input on a broad range of topics and enables valuable two-way conversation and idea generation.



Town Hall Videos

[February 2023](#)

[May 2023](#)



Upcoming Events

[Calendar of Upcoming Events](#)

June 14th Workshop

Albemarle is hosting a second round of end land use workshops to gather community feedback. This workshop will be focused on the end land use of the mine area, meaning once the mine is out of operation what does the community want to see on that property. This workshop is open to community members. Please use the links below to register.

[Click here to register for 8-10am workshop](#)

[Click here to register for 4-6pm workshop](#)

June 22nd Mining Tour

[Click here to learn more](#)

Tell Us How We're Doing